

## CAMPGROUND RULES AND REGULATIONS:

The following campground rules apply to all campers and guests:

- Quiet time is 11:00 PM – 6:00 AM.
- No littering. Dispose of trash properly.
- Parents are responsible for their children at all times. Please do not leave children unattended.
- Pets must be kept on a leash at all times and no excessive barking. Please clean up after your pet and do not leave pets unattended.
- No music or TV's should be heard beyond your site. No loud gatherings or parties.
- Park vehicles in designated areas only.
- No moving picnic tables to other campsites.
- No smoking in restrooms or bathhouses.
- No defacing signs, buildings, or any other structures in the park.
- Fires must be in the fire rings provided. Never leave a fire unattended and extinguish fires before turning in for the night or leaving the campground.
- No firewood may be brought from outside the park. No cutting down trees or plants. Firewood is available for sale at the Ranger Station
- No alcoholic beverages or glass bottles.
- No hunting. Firearms and fireworks are prohibited in campground.

## RESERVATIONS PAYMENT/CANCELLATION/CHANGE POLICY:

- All reservations require 100% payment at the time of booking.
- Refunds due to inclement weather will not be issued.
- No refunds for early departures unless necessary for medical reasons.
- No refunds will be given for cancellations on holiday or special event weekends. All other reservation cancellations require 48-hour notice.
- A \$10 fee (per site reserved) is non-refundable for all cancellations regardless of when the cancellation is done to cover processing fees.

## MAJOR ATTRACTIONS NEAR THE PARK:

- Ark Encounter – 48 minutes – 31.6 miles
- BB Riverboats – 32 minutes – 18.9 miles
- Creation Museum – 39 minutes – 32.6 miles
- Cincinnati Museum Center – 32 minutes – 20.8 miles
- Cincinnati Reds – 29 minutes – 19.2 miles
- Cincinnati Zoo – 34 minutes – 22.3 miles
- Freedom Center – 30 minutes – 19.1 miles
- Jack Cincinnati Casino – 30 minutes – 19.3 miles
- KY Speedway – 58 minutes – 45 miles
- Mainstrasse Village – 33 minutes – 20.7 miles
- Newport Aquarium – 31 minutes – 18.8 miles
- Newport on the Levee – 31 minutes – 18.8 miles
- New Riff Distilling – 30 minutes – 17.8 miles



<https://www.meetNKY.com>



Campbell County  
**A.J. JOLLY PARK**

# Campground Map and Information



**Ranger Station: 859-635-4423**

**Park Manager: 859-547-3681**

**Emergencies: Dial 911**

**1565 Race Track Road, Alexandria, KY 41001**

Check-in time is 3 pm ~ Check-out time is 11 am

Reservations will be confirmed upon full deposit

A two-night stay is required for holiday and special event weekends

Same day camping is welcome based on availability

We accept cash, check, Visa, Mastercard or Discover

Campbell County Parks and Recreation is not responsible for theft of camping equipment or contents, nor for any damage caused by natural causes.

All activities in the campground are done at your own risk and we are not responsible for injury to campers, guests or for loss of money/valuables of any kind.

Campgrounds are patrolled by Park Rangers and Campbell County Police.



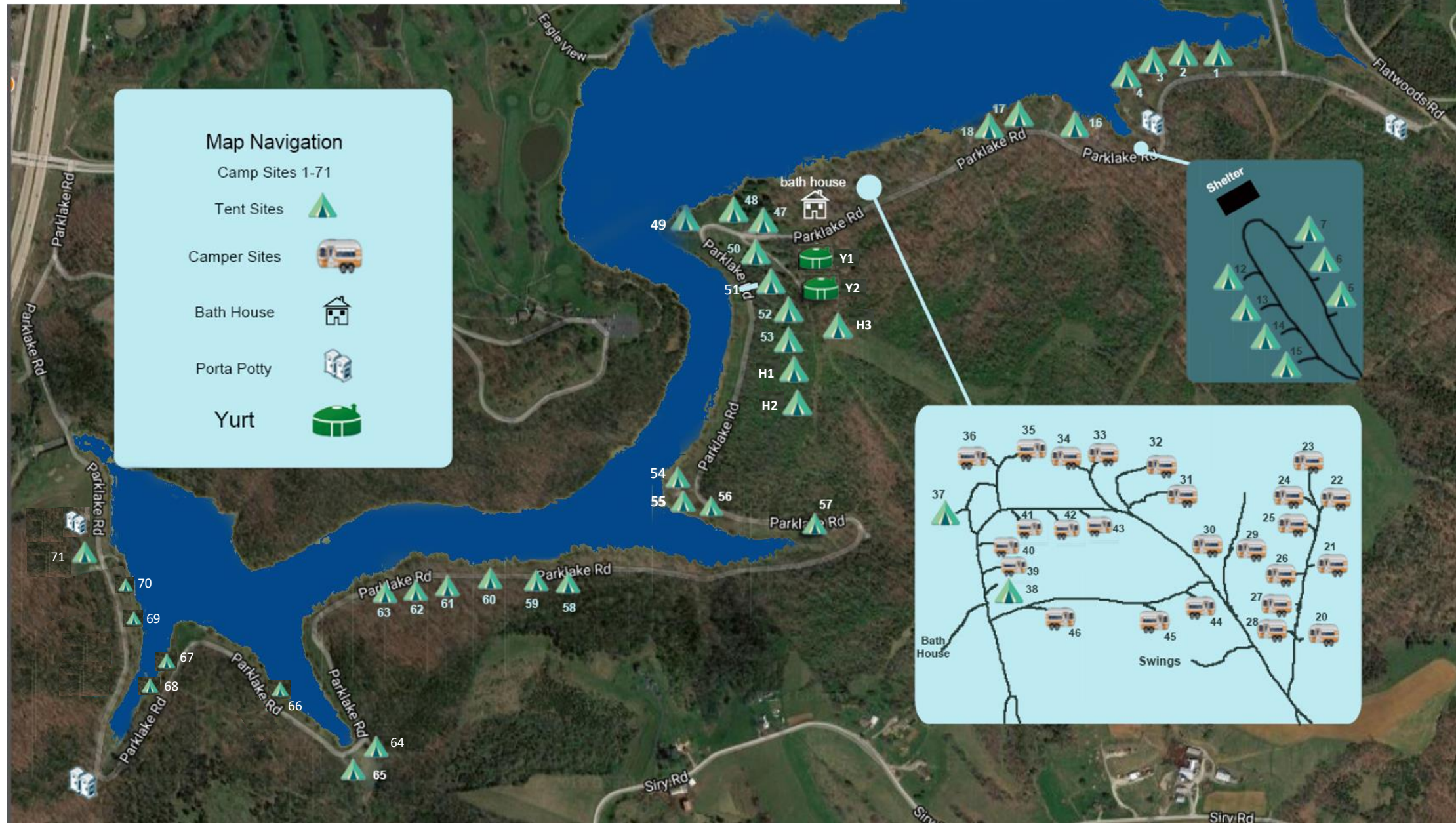
## IMPROVED SITES — 20-46

Improved sites have asphalt pads with water, 20/30 amp electric service, picnic table and fire ring; no sewer hookups. This area is best suited for pop-ups/small campers due to tight turning radius.

### Size of asphalt pad per site is below:

Site 20	50+ ft.	Site 34	35 ft.
Site 21	40+ ft.	Site 35	35 ft. (near lake on incline)
Site 22	50+ ft.	Site 36	35 ft. (near lake on incline)
Site 23	45 ft.	Site 37*	30 ft. *no electric or water
Site 24	28 ft. (has bench)	Site 38*	40 ft. *no electric
Site 25	30 ft.	Site 39	40 ft.
Site 26	30 ft.	Site 40	45 ft.
Site 27	28 ft.	Site 41	50+ ft.
Site 29	38 ft.	Site 42	30-35 ft.
Site 30	38 ft. (on hill)	Site 43	30 ft. (small site)
Site 31	45 ft.	Site 44	30 ft. (top of hill)
Site 32	45 ft.	Site 45	30 ft. (top of hill, need long electric cord)
Site 33	20 ft. (pop-ups only)	Site 46	50 ft. (large site)

## A.J. Jolly Park and Campground



## PRIMITIVE SITES — 1-7, 12-18, 47-71

All primitive sites are grass and gravel with one picnic table and fire ring; no water, electric or sewer hookups.

Sites 1, 2, 3, 14, 17, 18, H3, 54, 55-69, 71 – Grills provided on-site

Sites 5, 6, 7, 12, 13, 14 & 15 – Can be booked for group camping

Sites H1, H2, H3, Y1, & Y2 - On hill above bathroom

Site 16 – Handicap includes bench/dock & port-a-john

Sites Y1 & Y2 – “The Yurts” are fully furnished with electric

Site 49 – “The Point” near the lake

Site 54, 55 & 56 – Steep hill to site, near the lake

Site 64 – Cove, opposite side of the road from the lake

Site 65 – Huge site, opposite side of road from the lake

Site 66 – Huge site on point, rock fire ring

Site 67 & 68 – On cove, small sites

Site 69 & 70 – Very hilly

Site 71 – Huge site, opposite side of road from lake w/port-a-john

## RV/HORSE CAMPGROUND — RV1-RV12

Off Flatwoods Road. Large, level gravel sites with water and 20/30/50 amp electric, fire ring; no sewer hookups. Equestrian stables available for horses (horses cannot stay in campground overnight). One picnic table per site on concrete pad. Campground has picnic shelter and playground equipment.